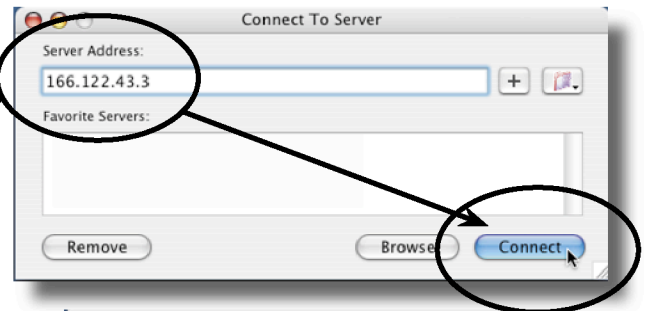


# Connect to the “M Drive” in Macintosh OS X

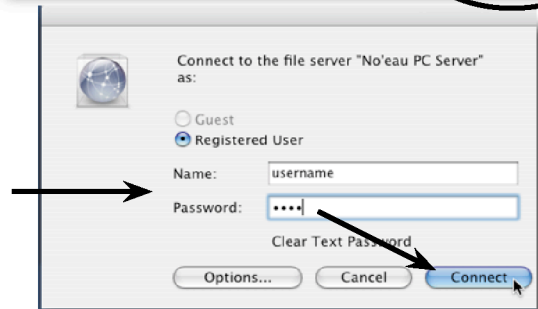
1. Click on “Go” in the Menu Bar and choose “Connect to Server.”



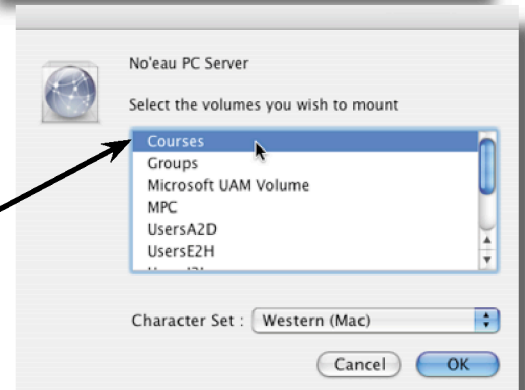
2. Type **166.122.43.3** in the “Server Address” box and click “Connect.”



3. The “Name” box will have your *full* name. CHANGE THIS to your *user name* and password in the appropriate boxes and click “Connect.”



4. Double-click on “Courses.” This is the M Drive.



5. The “Courses” icon will appear on the Desktop. Drag it down to the Dock and put it next to the Trash Can. The next time you login to a Macintosh computer, just click on the icon in the Dock and you will be connected to the M Drive (Courses).

